

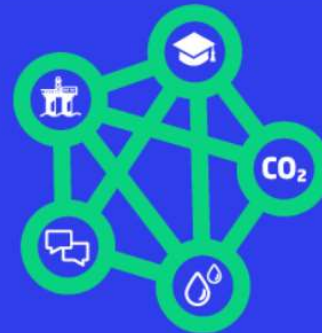
# CCS contribution in TotalEnergies' Net Zero Emission Ambition by 2050



## Focus on Project Bifrost

29 November 2022 – Kolding, Denmark

**Danish  
Offshore  
Technology  
Conference  
2022**

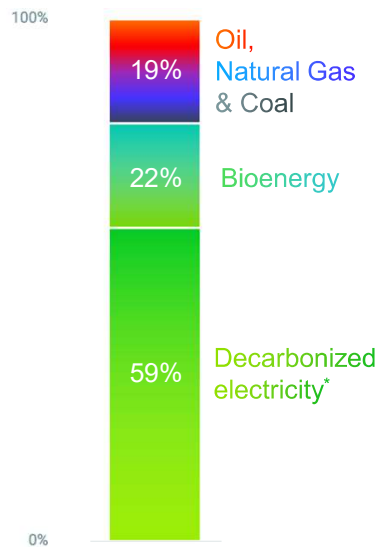


R&D for the Offshore  
Energy Transition

# TotalEnergies in 2050: a vision for a Net Zero company

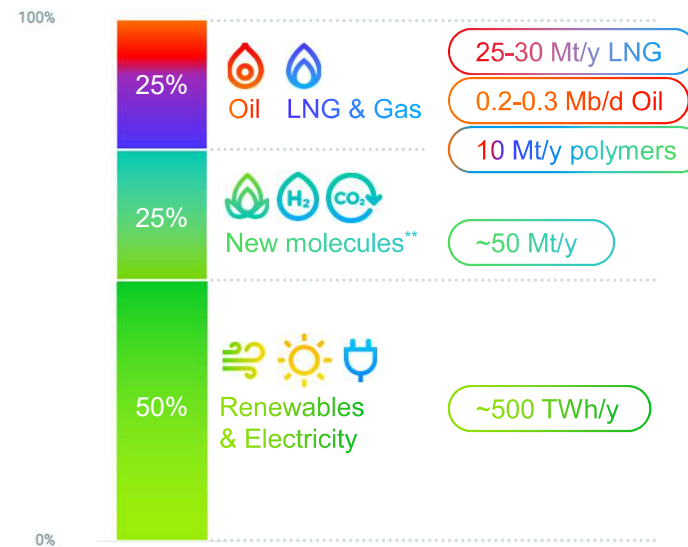


IEA NZE energy mix in 2050



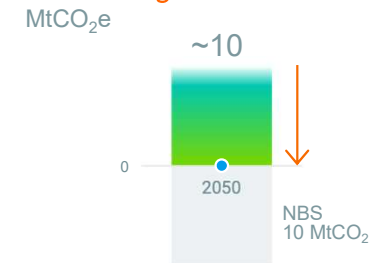
CCS: 7 GtCO<sub>2</sub>e

TotalEnergies' 2050 energy production & sales

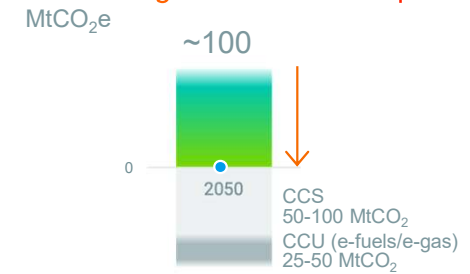


CCS: 50-100 MtCO<sub>2</sub>e

TotalEnergies Net zero Scope 1+2<sup>(a)</sup>



TotalEnergies Net zero Scope 3<sup>(b)</sup>



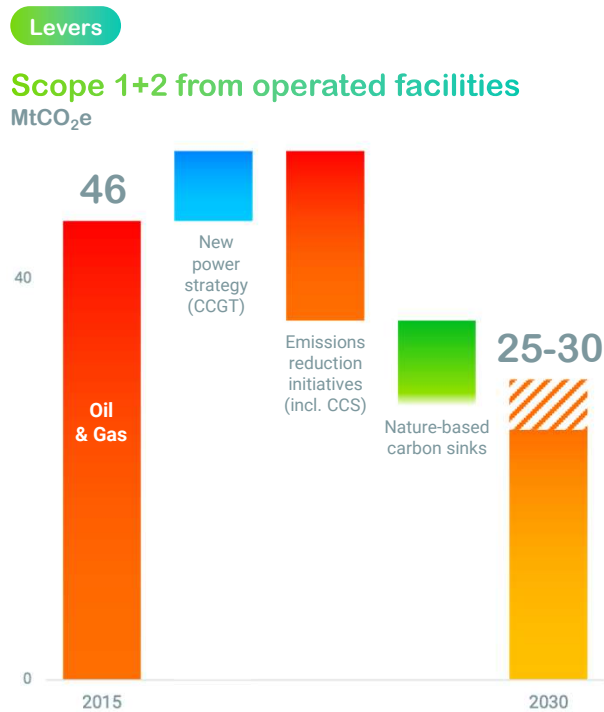
Net zero lifecycle carbon intensity<sup>(c)</sup>

-100%

\* Hydro, solar, wind and nuclear  
 \*\* Biofuels, biogas, hydrogen and e-fuels/e-gas  
 (a) From operated facilities  
 (b) From energy products used by our customers (GHG Protocol Category 11)  
 (c) Average carbon intensity of energy products used by our customers worldwide (Scope 1+2+3)

# Scope 1+2: mobilization on CO<sub>2</sub> reduction

Using best available technologies



## Stop routine flaring

- <0,1 Mm<sup>3</sup>/d by 2025
- Zero routine flaring by 2030

All new projects with closed flare  
Reduce non-routine flaring



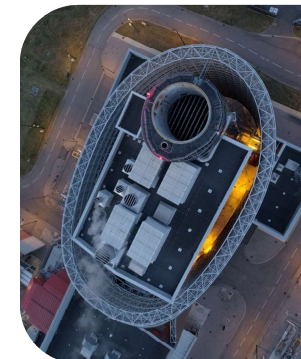
## Improve energy efficiency

- Reduce fuel gas consumption
- Optimize power consumption
- RC: 450 M\$ over 2018-25
- Deploy digital solutions



## Green power

- Cover all industrial sites' power needs with green electricity in Europe and the US
- > -2 MtCO<sub>2</sub>/y Scope 2 emissions by 2025



## Capture and store carbon

- Decarbonize all grey H<sub>2</sub> used in our European refineries
- -3 MtCO<sub>2</sub>/y by 2030
- Develop carbon transport and storage projects
- ~10 MtCO<sub>2</sub>/y capacity by 2030

# North Sea: the place to develop CCS

## Denmark as a European CO<sub>2</sub> hub



- EU favorable **regulatory policies**
  - Danish political agreements
  
- North sea region **large CO<sub>2</sub> storage potential** (saline aquifer structures and depleted O&G fields)
  - Huge potential in Danish subsoil assessed by GEUS
  - Potential repurposing of existing O&G assets
  
- Northern Europe, an area of **concentrated CO<sub>2</sub> emissions**
  - Strategic location of Denmark
  
- New players' emergence

# Deploying CCS strategy

Reducing emissions and developing profitable business



## Incorporating CCS in our assets

- Avoid emissions in greenfield projects
  - North Field East & South (Qatar)
  - Papua LNG
- Reduce emissions from existing assets
  - Ichthys (Australia)  
awarded GHG storage assessment permit
  - Cameron LNG (US)  
Hackberry Carbon Sequestration project under development
  - Refineries

## Offering Carbon Transport & Storage services

- Build a profitable, scalable business and reduce Scope 3 emissions by offering CCS solutions to our customers
- **North Sea core area**
  - Under Construction, **Northern Lights**
  - Under development
    - Focusing on our depleted assets and saline aquifers
    - **Aramis (NL, op.), Bifrost (Denmark, op.), NEP (UK)**
- Worldwide growth options

2030 target (Company share)

> 10 Mt/y

Growing investment to

~300 M\$/y



# Investing in CO<sub>2</sub> storage services for our customers

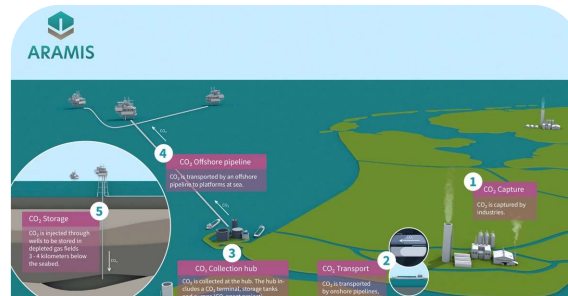
Focus on CO<sub>2</sub> transportation and storage projects



## Norway

**Northern Lights** (TotalEnergies 33%)

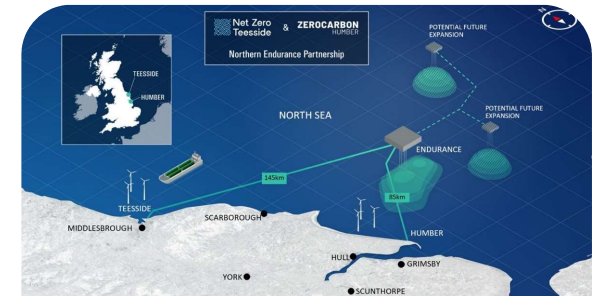
- Phase 1 (FID 2020)  
Up to **1.5 MtCO<sub>2</sub>/y** by 2025
- Phase 2  
Capacity expansion for European emitters' needs up to **5 MtCO<sub>2</sub>/y** by 2030



## Netherlands

**Aramis** (TotalEnergies 25%)  
**CO<sub>2</sub> storage** (TotalEnergies 60%, operator)

- Aramis project
  - Onshore CO<sub>2</sub> multimodal terminal and transport infrastructure to offshore storage area
  - > 5 MtCO<sub>2</sub>/y transport capacity from 2026 (Ph. 1)
- Operated storage: 2.5 MtCO<sub>2</sub>/y (Ph. 1)  
to 8 MtCO<sub>2</sub>/y in 2030 based on customer demand



## UK

**NEP\*** (TotalEnergies 10%)

- Onshore and offshore infrastructure for storage in the Endurance reservoir, a large-scale saline aquifer
  - **4 MtCO<sub>2</sub>/y** by 2026
  - > 400 MtCO<sub>2</sub> storage capacity

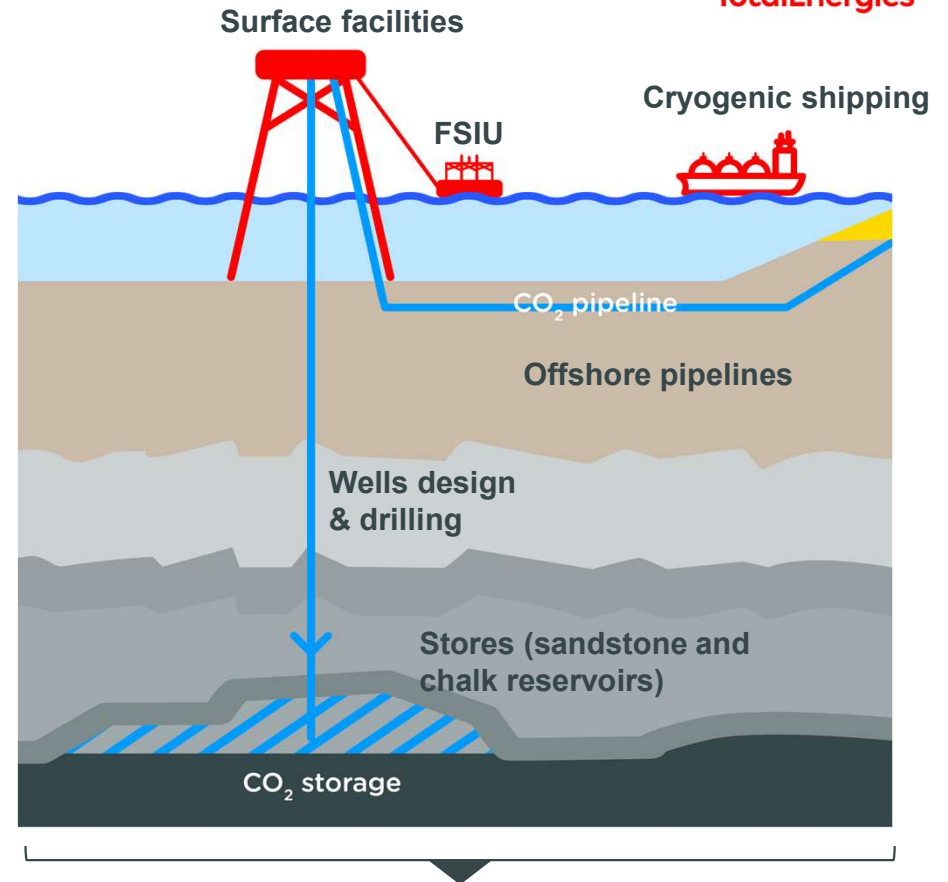
\* Northern Endurance Partnership

# Bifrost, transportation and storage in the Harald fields

Re-purposing existing O&G assets



-  bifrost, 2 year-study funded by **EUDP**
- Study partners:
  -  
  -   
- Develop safe and permanent CO<sub>2</sub> storage in the Danish North Sea.
  - Potential play opener for storage in chalk
- Perform the groundwork necessary to demonstrate **a robust concept for CO<sub>2</sub> transportation and storage**, re-purposing some existing facilities and developing new activities.



# Bifrost, store qualification



Storage capacity	Injectivity	Containment	Main Risks
Evaluation of CO <sub>2</sub> storage capacity	Injection rate and injectivity impairment (Several chemical, biological and mechanical effects can impact the injectivity during CO <sub>2</sub> injection )	Storage site safety (When CO <sub>2</sub> is injected, it may interact with the caprock and decrease its sealing capacity. Other factors such as fault reactivation or fractures may also pose a risk for leakage.)	Cap rock integrity Alteration of fault properties Injectivity loss Well integrity

- Joint analysis of geosciences & engineering disciplines and specialties concludes that **safe CO<sub>2</sub> storage on Harald West sandstone** field is highly likely.
  - **Strong seal**
  - **Integrity** of legacy wells
- Preliminary studies have not identified any show-stoppers for **CO<sub>2</sub> storage in Harald East**. Harald East chalk reservoir is being matured as a complement to the sandstone store & may be the first step to **unlock a significant storage potential offshore Denmark**
- Further modeling, assesments and uncertainties analysis ongoing to qualify a **robust & safe development** for CO<sub>2</sub> permanent storage

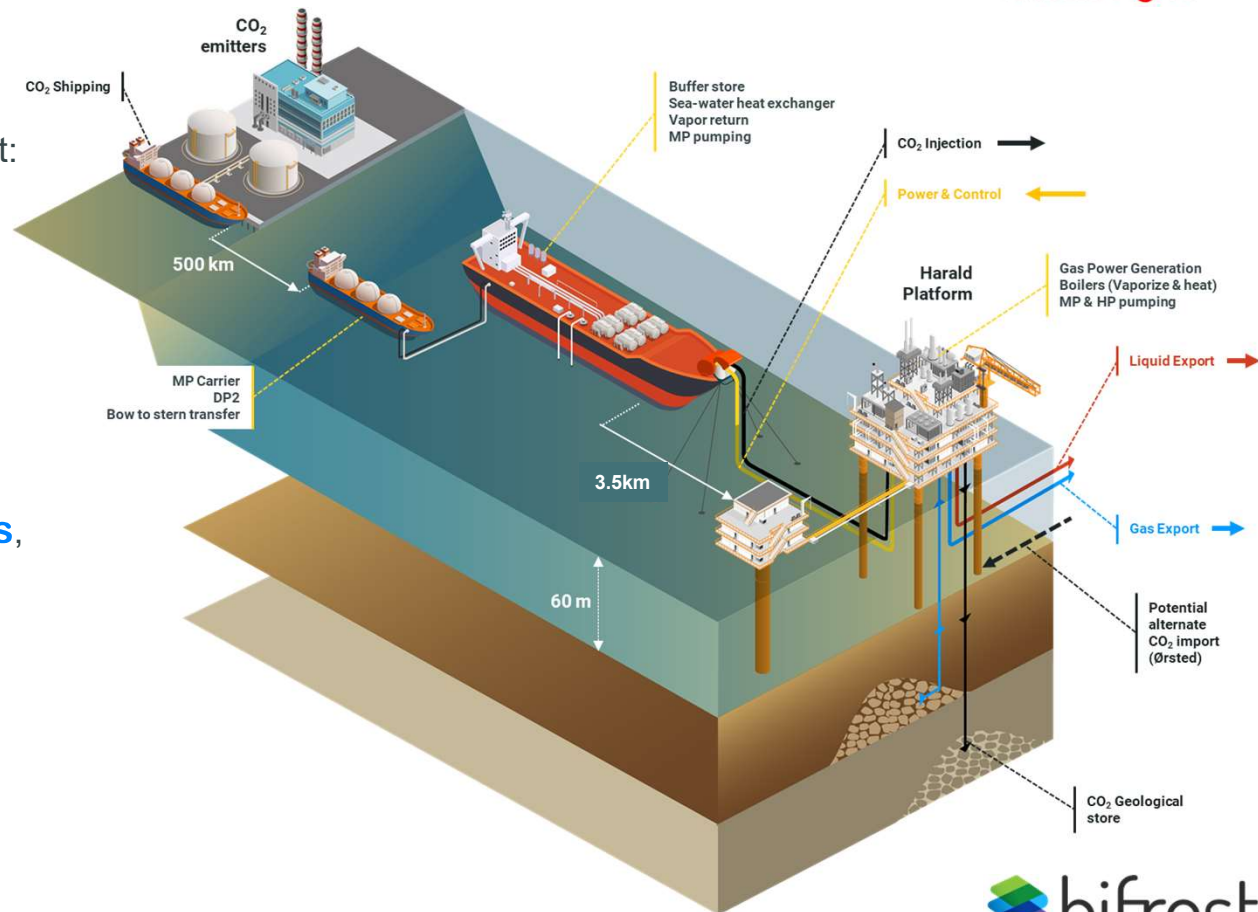




# Bifrost, offshore development concept maturation



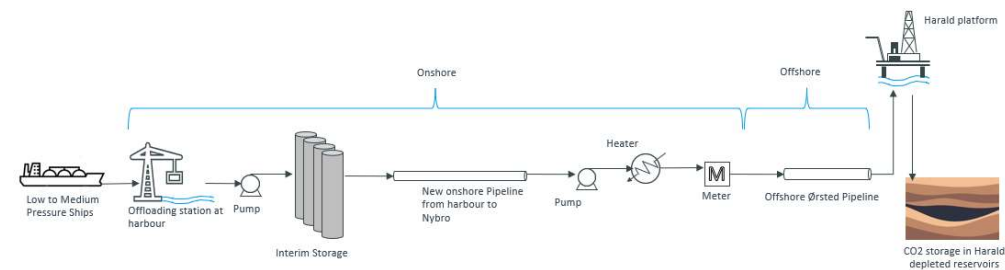
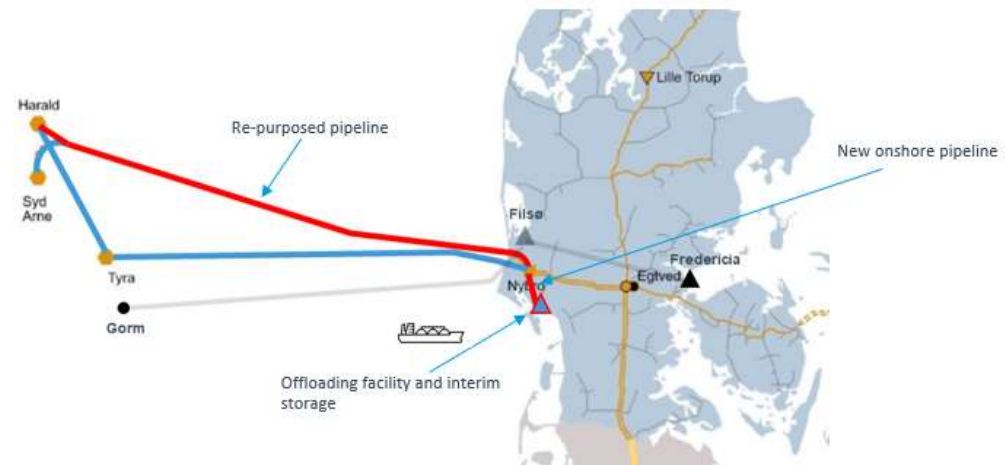
- Feasibility of a fully offshore offloading concept:
  - LCO2 full offshore chain, continuous injection, MP conditioning, cryo spec
  - **Well conversion and completion design**
  - **Injection in depleted fields**
  - Technology maturation with the **identification of technological gaps**, engage vendors and **initiate qualification programs** (wells, flexible lines, process...)
- **Integration** on Harald platform, full chain flow assurance in SIMOPS



# Bifrost, repurposing gas pipeline for CO<sub>2</sub> transport



- Re-use of existing pipelines is a **key lever to optimize costs** and **reduce carbon footprint**.
- Preliminary assessment indicates suitability of existing gas pipeline for CO<sub>2</sub> transport
  - Dense phase
  - Dry CO<sub>2</sub> purity (subject to further investigation), in line with cryogenic spec
  - Capacity example: from the operating envelope of the 24" Harald to Nybro pipeline; ~12 Mtpa at 80 barg
- Main technical risks to be further studied:
  - Corrosion
  - Running ductile fracture
- Permitting and regulation for converted pipeline to be further investigated



# Safe permanent storage & public perception



- **Safety, Environment, Societal**

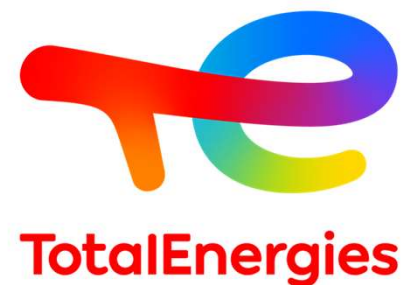
- Implement **high HSE technical standards** for Bifrost.
- Define permit and consent register in compliance with regulations in place
- Perform **Environmental and Societal baseline surveys** (EBS & SBS)

- **Monitoring technologies** being studied

- A **monitoring digital twin concept** (utilizing an **advanced machine learning method**) will be studied for an application on Harald fields to optimize prediction of CO<sub>2</sub> plume migration
- A new highly sensitive stationary **specific chemical sensor** is developed to enable **environmentally safe permanent offshore storage operations**.

- **Socio-economic and perception**

- A **national survey reaching 50,000 Danish households and with over 8,000 respondents** carried out together with dedicated stakeholder interviews to assess the perception & acceptance of CCS in the country
  - In tomorrow's afternoon agenda!



Thank you!  
and

Stay tuned, Bifrost website  
coming out soon!

# Avertissement - Propriété intellectuelle



## Définition TotalEnergies / Compagnie

Les entités dans lesquelles TotalEnergies SE détient directement ou indirectement une participation sont des personnes morales distinctes et autonomes. Les termes « TotalEnergies », « compagnie TotalEnergies » et « Compagnie » qui figurent dans ce document sont utilisés pour désigner TotalEnergies SE et les entités comprises dans le périmètre de consolidation. De même, les termes « nous », « nos », « notre » peuvent également être utilisés pour faire référence à ces entités ou à leurs collaborateurs. Il ne peut être déduit de la simple utilisation de ces expressions une quelconque implication de TotalEnergies SE ni d'aucune de ses filiales dans les affaires ou la gestion d'une autre société de la compagnie TotalEnergies.

## Avertissement

Cette présentation peut contenir des déclarations prospectives, au sens du Private Securities Litigation Reform Act de 1995, relatives à la situation financière, aux résultats d'exploitation, aux activités, à la stratégie et aux projets de TotalEnergies, qui sont soumis à des facteurs de risque et à des incertitudes résultant de changements dans, notamment, le développement et l'innovation technologiques, les sources d'approvisionnement, le cadre juridique, les conditions de marché, les événements politiques ou économiques. TotalEnergies n'assume aucune obligation de mettre à jour publiquement les déclarations prospectives, que ce soit en raison de nouvelles informations, d'événements futurs ou autres. De plus amples informations sur les facteurs susceptibles d'affecter les résultats financiers de la Compagnie sont fournies dans les documents déposés par TotalEnergies auprès de l'*Autorité des Marchés Financiers* et de la US Securities and Exchange Commission. En conséquence, aucune certitude ne doit être accordée à l'exactitude ou à la justesse de ces déclarations.

## Propriété intellectuelle

Toute reproduction, publication, transmission ou plus généralement toute exploitation des éléments de cette présentation est interdite, sauf autorisation écrite expresse de TotalEnergies.